



MATCH Newsletter

MOBILISING ADVANCED TECHNOLOGIES FOR CARE AT HOME

<http://www.match-project.org.uk>

Issue 2: June 2008

MATCH's Busy Life

MATCH, a research project looking at the design, implementation and evaluation of technologies for the home that can support or enable health or social care, is now well into its third year. As this issue of the newsletter demonstrates, we have been very busy, producing internationally-recognised research, engaging with home care service providers and users, and welcoming a new addition to the MATCH community.

Welcome to our latest partner: Midlothian Council.

Midlothian Council is committed to promoting Telecare as an integral component of mainstream care provision. Working in conjunction with existing services and developing services such as Care and Repair and the Rapid Response Service, their aim is to provide service users and carers with choice and to support people to live independently, in a safe and secure environment.

To promote the new Telecare service, a Telecare House is being established in Roslin. It will provide a venue for demonstration of equipment, training and awareness sessions for a range of potential referrers. It will also be available to potential service users, their families and carers. Neighbouring authorities have expressed interest in using the telecare house, something which Midlothian would welcome.

Another major development in Midlothian is the Newbyres Village Care Home, in Gorebridge. Alongside this, 10 individual properties are being built which will be equipped with a range of Telecare equipment. The tenancies of these properties will be allocated by Social Work, according to need. They will operate independently of, but in association with, the new care home. The model of care provided will be person centred and enable service levels to be scaled up or down, to meet the changing needs of the service users. This innovative project and the telecare house provide scope for MATCH and the Council to work with individual tenants to develop a range of individualised solutions and jointly develop telecare.

We look forward to collaborating in this new partnership. MATCH's partners and stakeholders welcome them on board!



Including Stakeholders in the Design of Home Care Technology

The MATCH project continues to engage with service users, health and social care professionals, and others to establish how we can improve the success and uptake of home care technologies in Scotland. A series of focus groups have been conducted with a variety of stakeholders including older users, social care professionals, installation technicians, policy makers, and informal carers.

An analysis of the discussions with these different stakeholder groups allowed us to identify the main issues in the uptake of home care technologies:

- Acceptance Issues
- Ethical/Legal/Privacy Issues
- Availability of Resources
- Individual and dynamic user needs
- Appropriate use/prescription of technology
- Awareness, education, and training

The full results of these focus groups can be found in a technical report on our website:

www.match-project.org.uk/resources/project_publications.html

MATCH researchers are now working with various partners to address these issues and improve the success of home care technology.

If you or your organisation would like to be involved in MATCH research into home care technologies or if you have something to contribute to the next newsletter, please get in touch using the contact details below.

Contact: Louise Bellin

Mail – news@match-project.org.uk

Post – MATCH Office, Computing Science and Mathematics, University of Stirling, FK9 4LA.

Tel - +44 (0)1786 467429



MATCH Research Reaches International Audiences

MATCH at CHI 2008 Florence, Italy, 5-10 April



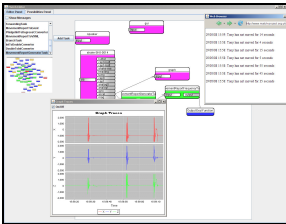
MATCH researchers from the University of Dundee presented a paper and held an exciting theatre event at the world's premiere conference on Computer-Human Interaction (CHI), held this year in Florence at the beginning of April. The event was a huge success with an audience made up of researchers and experts in user interface design and evaluation. Live interactive forum theatre such as this takes role-play in research and system development to a new level. Different audiences such as health professionals and service users can be brought together and invited to interact with characters representing real users in realistic situations. This is proving to be an excellent way to break down barriers and share experience and opinions between stakeholders in an engaging way. Footage of the MATCH theatre experience can be found on the MATCH website.

The MATCH team at Glasgow University were also highly visible at CHI with a short paper from Marilyn McGee-Lennon on the issues involved in including various stakeholders of home care in the design of home care technologies. Marilyn also presented a workshop paper written with Julia Clark on distributed stakeholder requirements in home care. All these papers can be found in the publications section on the project website.

DSV-IS 2008, Ontario, Canada, July 2008

In a paper to be presented at DSV-IS 2008 (Design, Specification and Verification of Interactive Systems) in Kingston, Ontario, Canada, we present a computer-based technique for modelling, representing and providing support for the configuration of home care systems. This new model unifies a number of existing techniques into a single consistent model and allows people to more flexibly specify their requirements or preferences for interaction.

A McBryan and P Gray



Telecare Programme Board Update

The Telecare Programme Board have recently announced an additional £8m funding for 2008-10 to be allocated to partnerships across Scotland. At their last meeting in May, the Board also endorsed the draft Strategy for 2008-10 which identifies that development of Telecare training materials is critical for professional, users and carers. A Training Steering Group has been established to progress this matter. Louise Bellin is the MATCH representative on this group along with Linda Macpherson and Fiona Taylor and we would love to hear your views or discuss telecare training in more depth. Email: louise@cs.stir.ac.uk

PETRA, Athens, Greece, July 2008

There are many sources of change within home care systems. Peoples changing needs, beliefs and preferences will influence how they might want to interact with home care technologies. In an upcoming paper to be presented at PETRA (Pervasive Technologies Related to Assistive Environments) in Athens we present approaches that support the ability for a system to evolve over time to meet a persons changing needs.

A McBryan M McGee-Lennon and P Gray

Users of home care systems vary in their health. They also vary in their personal wishes, including lifestyle and privacy preferences. This entails different needs for support and monitoring, as well as requirements for home care products and services.

In this PETRA paper, we explore how a policy-based approach could be used to support the personalisation of home care systems. We identify different preferences that the user may have over home care systems, and show how to personalise home systems by using the policy language we developed.

Feng Wang and Ken Turner



Baby MATCH

Congratulations to Maria Wolters and family who had their second child, a little boy called Adam, in March this year. And congratulations also to Chris Martin and Jules who has their first child, Oliver, in April this year.

Mail – news@match-project.org.uk

Post – MATCH Office, Computing Science and Mathematics, University of Stirling, FK9 4LA.

Tel - +44 (0)1786 467429

