

MATCH (Mobilising Advanced Technologies for Care at Home)

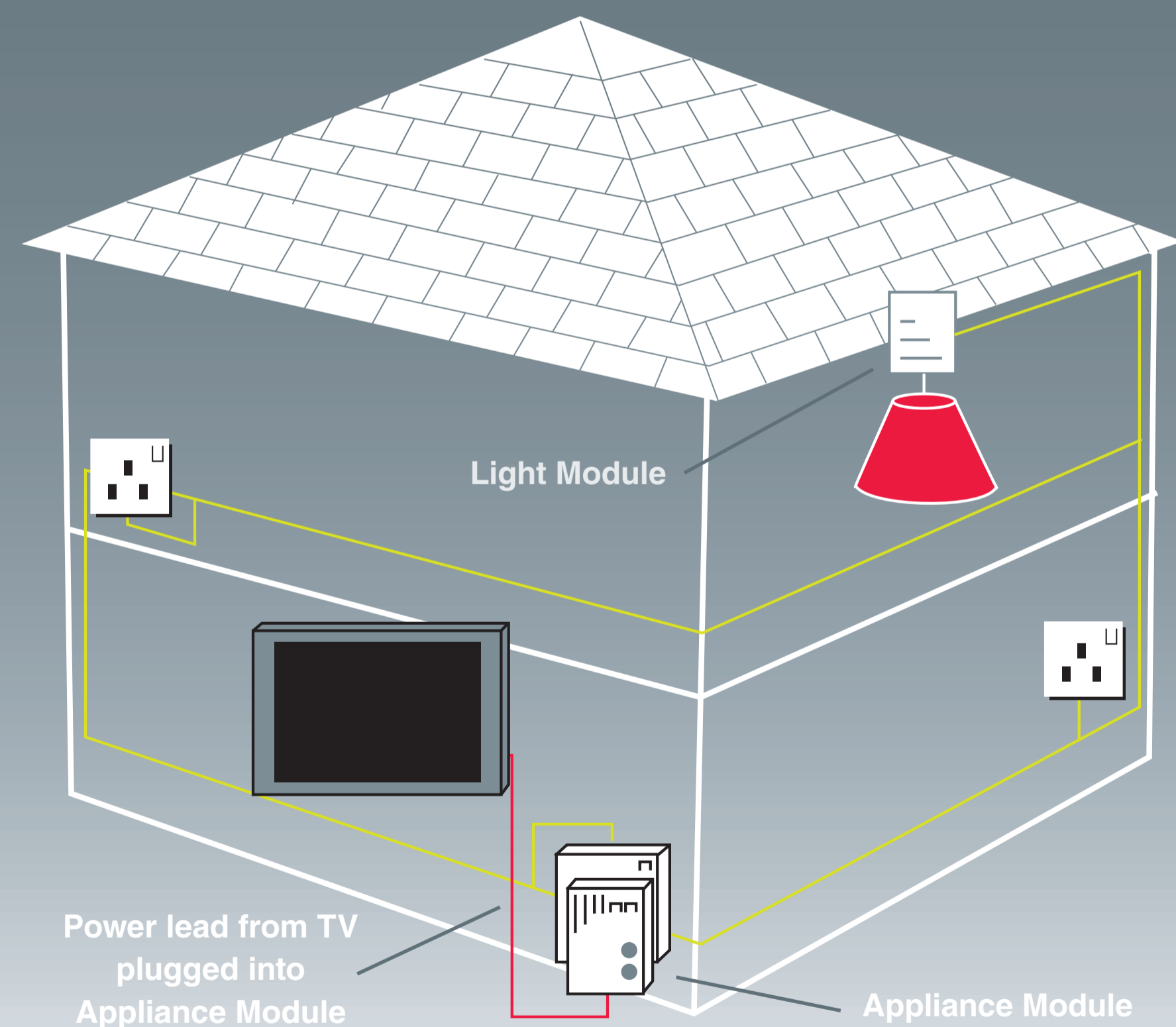
What is MATCH working on?

MATCH is developing and testing a range of integrated technologies to support home care. Most of the work involves advanced computer software.

The research is also studying what users and other people want from technology, how to make it easy to use, and ensuring it is used appropriately.

Home care networks

A home care network links devices to help people around the home. It can also connect to call centres for help when needed.



Understanding daily activity

Sensors can pick up patterns relating to how a home is used by its occupants. The system can build up a picture of how the person is doing and detect unusual changes. It can then send out alerts to ask someone to check on them.

It is important to find out what users want from home care networks so the system can help the person in the best way possible.

Using home care technology

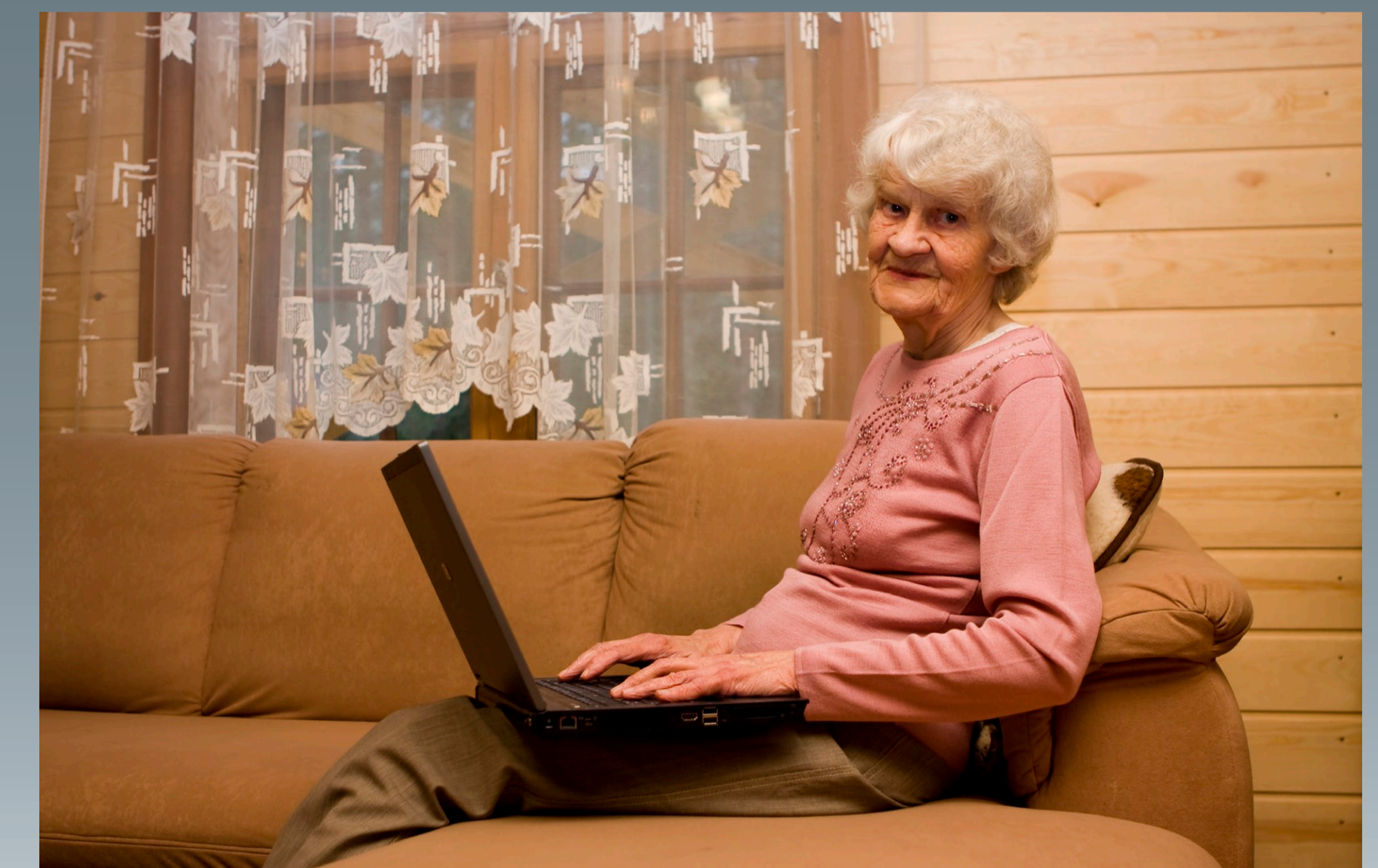
Home care technology needs to be smart enough to work by itself and adapt as the person's needs change. It must be easy to control, perhaps by nurses or the person in the house.

Different users will want to communicate with the system in different ways, and this might change over time. Different ways of using the technology include speech, sound, graphics, gesture and touch.

Communicating using speech

MATCH uses techniques that allow a computer to understand spoken commands. Natural-sounding speech can also be used for replies and advice. This allows people to use the home care system in an easy way. The approach is designed to work well for older people.

Speech can be used, for example, to remind older people to take their medicine or go to an appointment.



Find out more on our web site:
www.match-project.org.uk



UNIVERSITY OF
STIRLING

